



**REGIONAL SPECIALISED METEOROLOGICAL CENTRE - TROPICAL CYCLONES, NEW DELHI  
TROPICAL WEATHER OUTLOOK**

**DEMS-RSMC TROPICAL CYCLONES NEW DELHI DATED 17.01.2025**

**TROPICAL WEATHER OUTLOOK FOR THE NORTH INDIAN OCEAN (THE BAY OF BENGAL AND THE ARABIAN SEA) VALID FOR THE NEXT 168 HOURS ISSUED AT 0600 UTC OF 17.01.2025 BASED ON 0300 UTC OF 17.01.2025.**

**BAY OF BENGAL:**

Scattered to broken low and medium clouds with embedded intense to very intense convection lay over South Bay of Bengal south of latitude 12.0°N. Scattered low and medium clouds with embedded moderate to intense convection lay over South Andaman Sea and isolated weak to moderate convection lay over North Andaman Sea. Scattered low and medium clouds lay over rest Bay of Bengal.

**\*PROBABILITY OF CYCLOGENESIS (FORMATION OF DEPRESSION) DURING NEXT 168 HRS:**

| 24 HOURS | 24-48 HOURS | 48-72 HOURS | 72-96 HOURS | 96-120 HOURS | 120-144 HOURS | 144-168 HOURS |
|----------|-------------|-------------|-------------|--------------|---------------|---------------|
| NIL      | NIL         | NIL         | NIL         | NIL          | NIL           | NIL           |

**\*NOTE: EVERY 24HR FORECAST IS VALID UPTO 0300 UTC (0830 IST) OF NEXT DAY**

**ARABIAN SEA:**

Yesterday's upper air cyclonic circulation over southeast Arabian Sea off south Kerala coast at 1.5 km above mean sea level has become less marked at 0300 UTC of today, the 17<sup>th</sup> January, 2025.

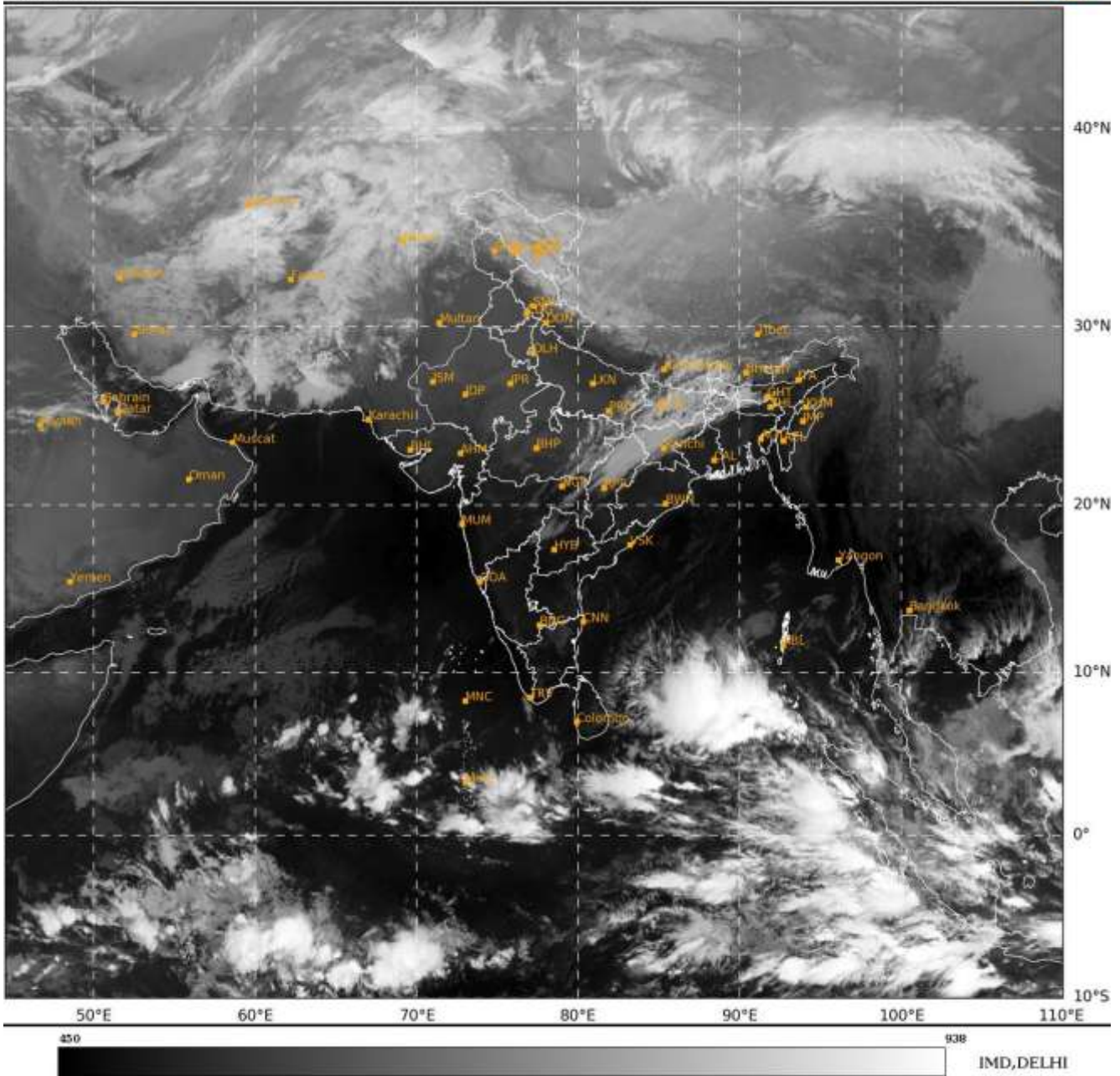
Scattered low and medium clouds with embedded moderate to intense convection lay over South Arabian Sea, Maldives area and isolated weak to moderate convection lay over Lakshadweep Islands area & Comorin area. Scattered low and medium clouds lay over Central Arabian Sea.

**\*PROBABILITY OF CYCLOGENESIS (FORMATION OF DEPRESSION) DURING NEXT 168 HRS:**

| 24 HOURS | 24-48 HOURS | 48-72 HOURS | 72-96 HOURS | 96-120 HOURS | 120-144 HOURS | 144-168 HOURS |
|----------|-------------|-------------|-------------|--------------|---------------|---------------|
| NIL      | NIL         | NIL         | NIL         | NIL          | NIL           | NIL           |

**\*NOTE: EVERY 24HR FORECAST IS VALID UPTO 0300 UTC (0830 IST) OF NEXT DAY**

**REMARKS: NIL**



Cloud distribution: (a) Isolated: <25%, Scattered:25-50%, Broken: 51-75%, Solid:>75%, Convection Intensity: (a) Weak: Cloud Top Temperature(CTT)>-25°C,(b)Moderate:CTT:-25°Cto-40°C,(c)Intense:CTT: -41°Cto -70°Cand(d)VeryIntense::Lessthan -70°C  
PROBABILITYOFCYCLOGENESIS(FORMATIONOFDEPRESSION):NIL:0%,LOW:1-33%,MODERATE:34-66%ANDHIGH:67-100%  
ThisisaguidanceBulletinforWMO/ESCAPPanelMembercountries.VisitrespectiveNationalwebsitesforCountryspecificBulletins